



Atlas Copco



Atlas Copco Group Facts and figures



HOME OF INDUSTRIAL IDEAS
150 YEARS
1873-2023
ATLAS COPCO GROUP



This is the Atlas Copco Group



Customers in more than **180** countries



49 000 employees in **70** countries



Established in **1873** Stockholm, Sweden



Turnover of **141** BSEK/ **13** BEUR*



Operating margin of **21.4%**

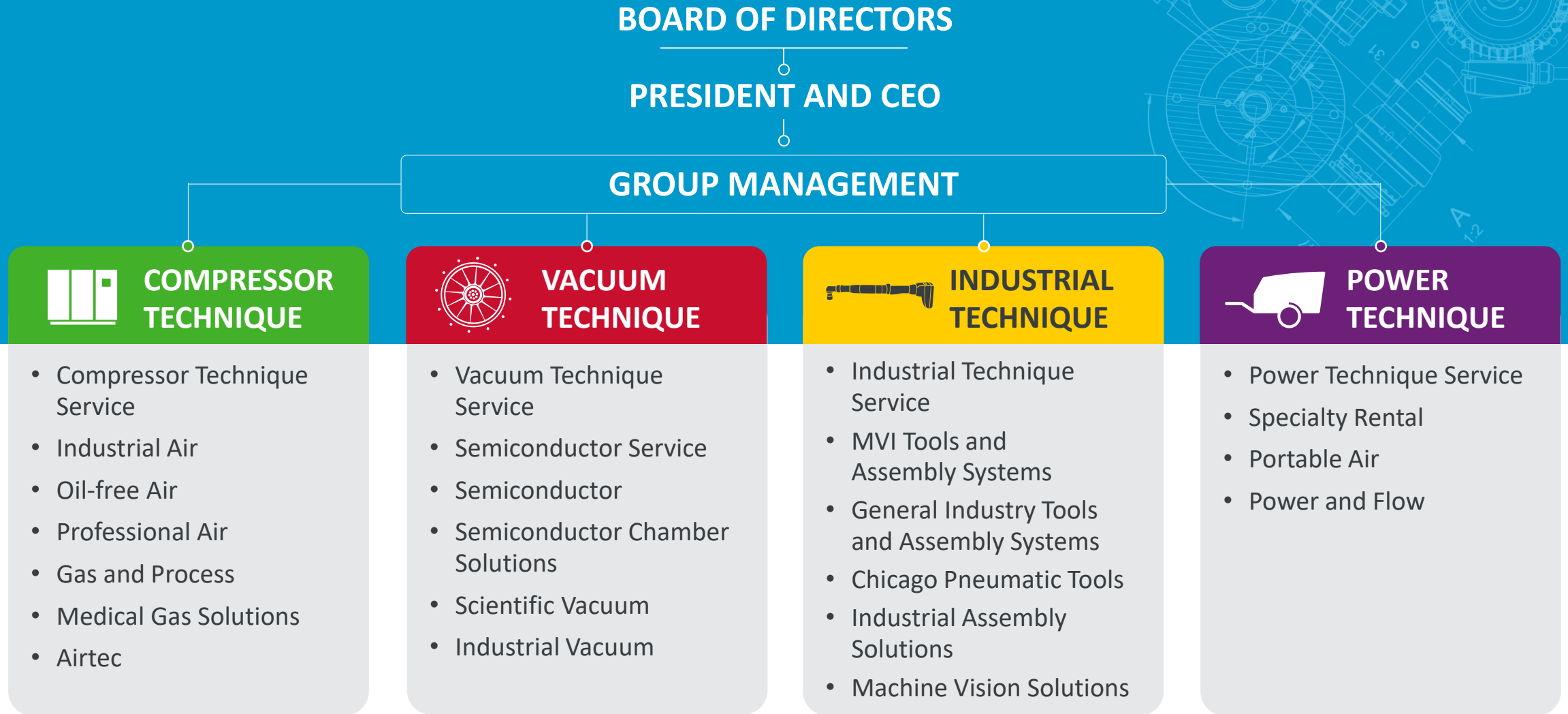
*Based on the average exchange rate in 2022.

Atlas Copco

Customers in all industries



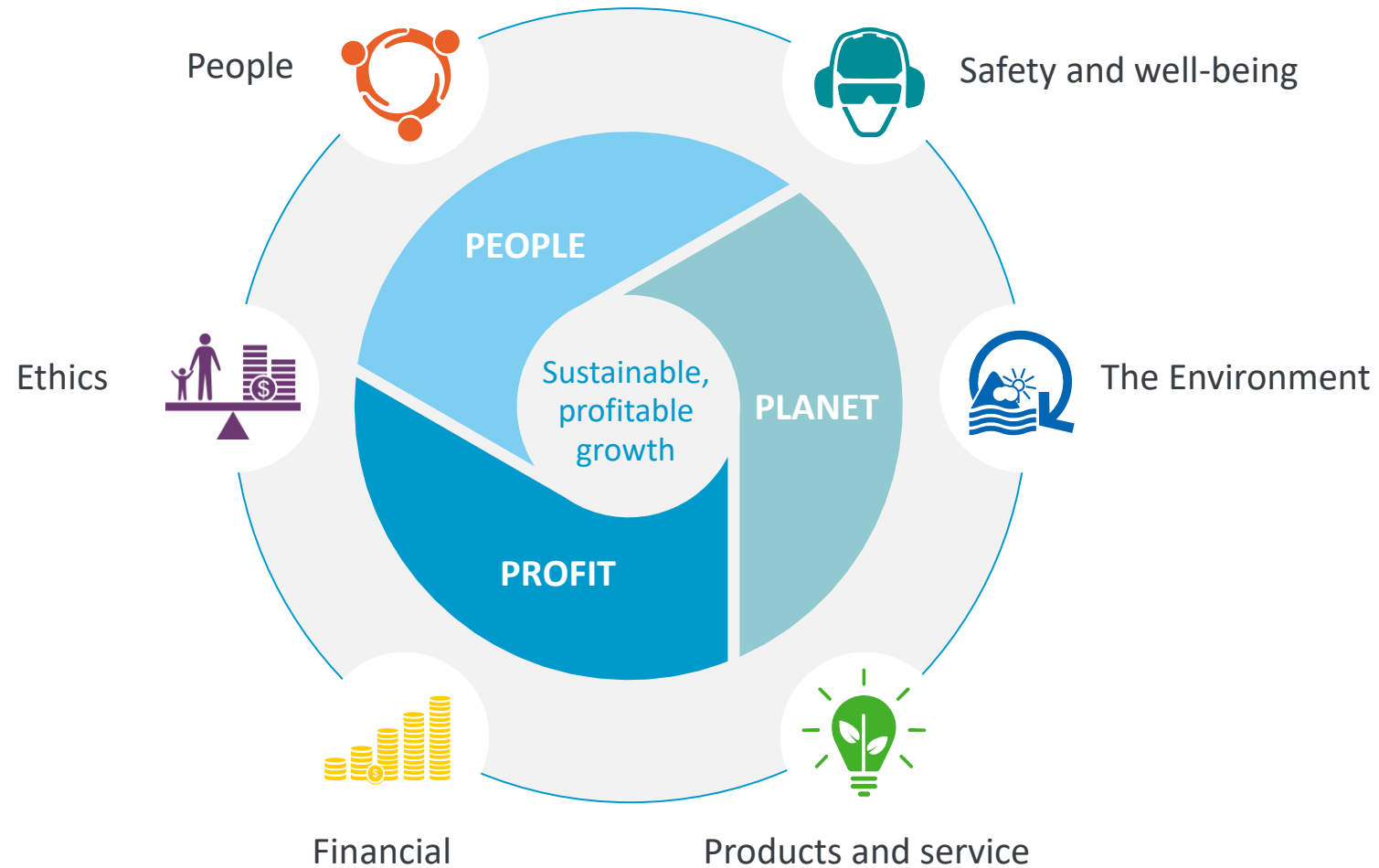
A decentralized Group



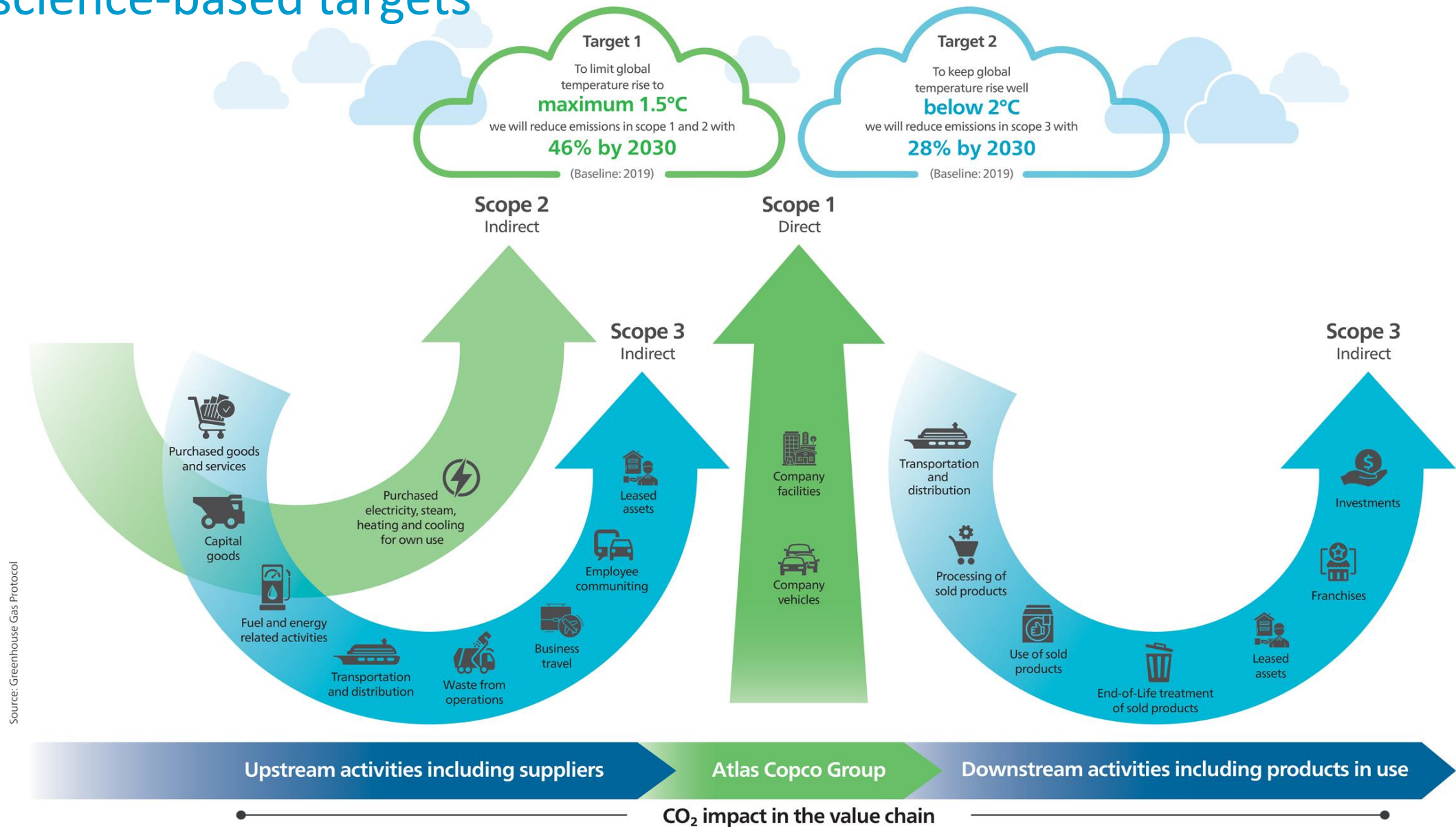
Our purpose



How we deliver lasting value



Our science-based targets



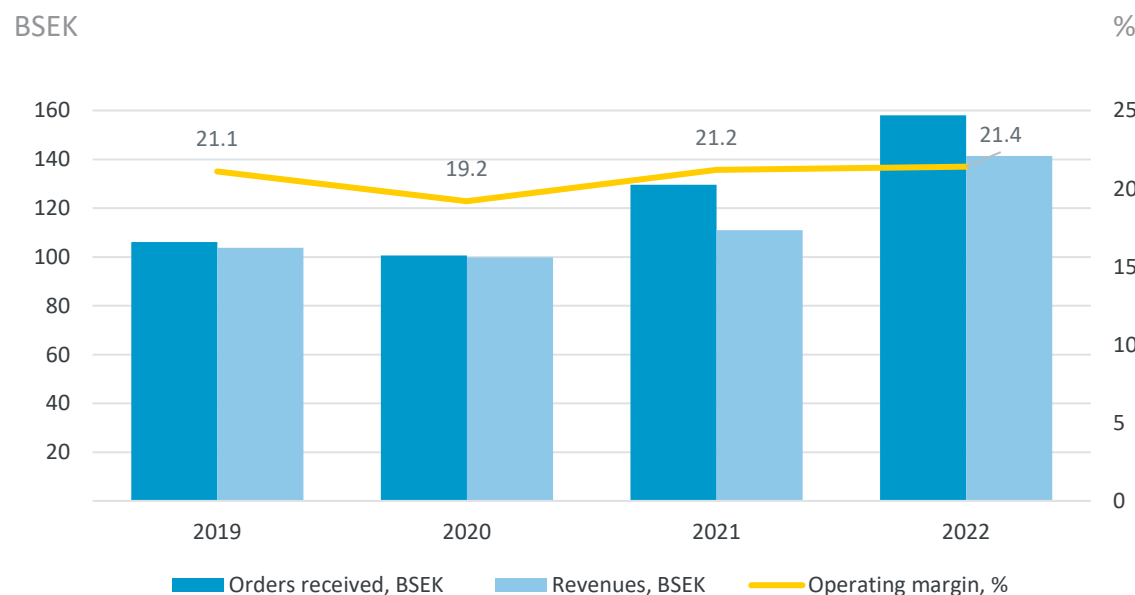
The Atlas Copco Group in 2022

Revenues
141 BSEK / 13 BEUR*

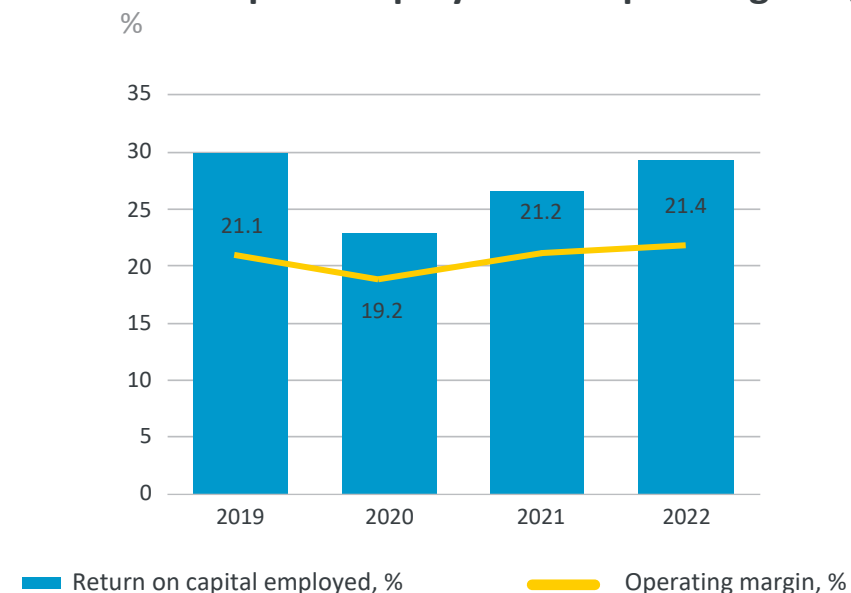
Operating margin
21.4%

Return on capital employed
29%

Orders received and revenues

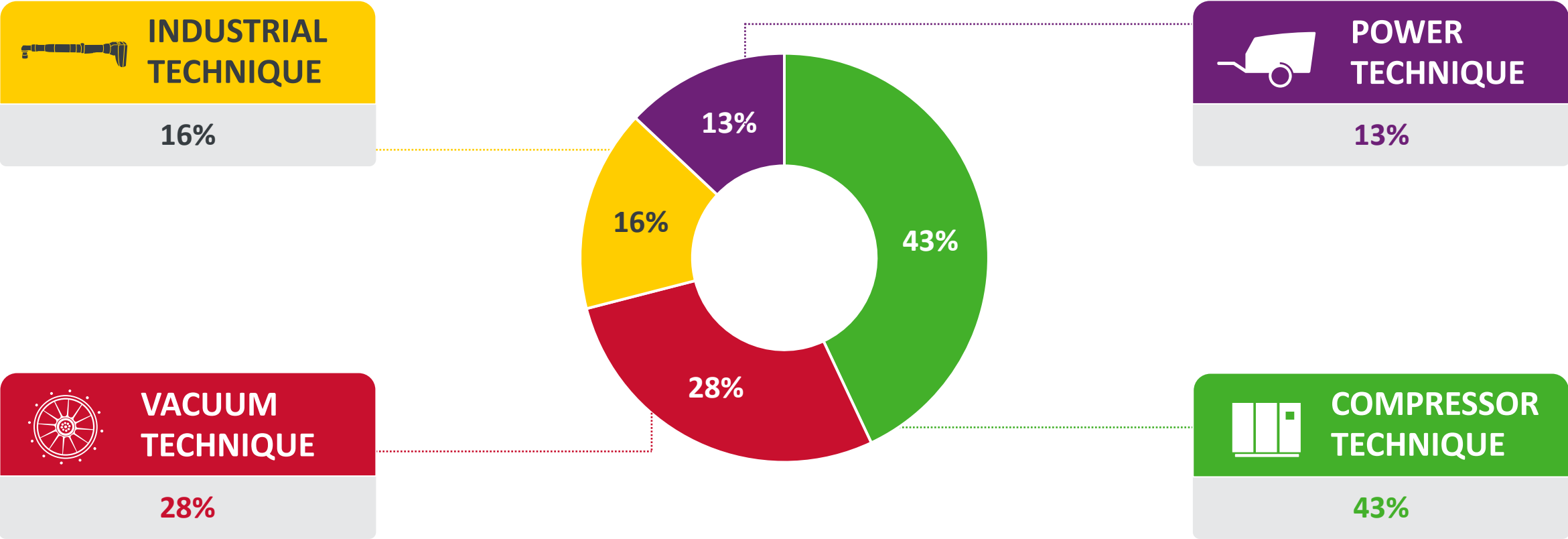


Return on capital employed and operating margin



*Based on the average exchange rate in 2022.

Revenues per business area



*Figures show percent of revenues 12 months ending Dec 31, 2022.



COMPRESSOR TECHNIQUE

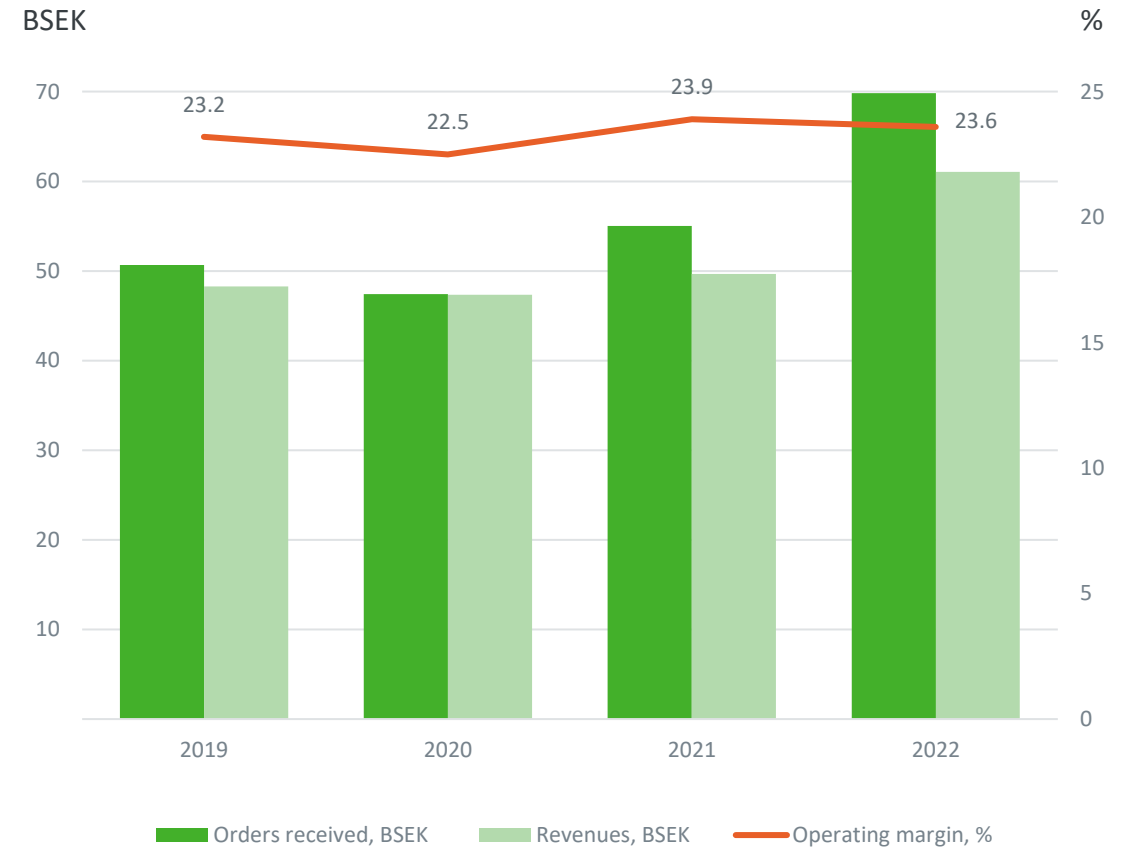
Revenues 2022

BSEK 61.1 / BEUR 5.7*

Share of Group revenue
43%

*Based on the average exchange rate in 2022.

Orders received, revenues and operating margin





VACUUM TECHNIQUE

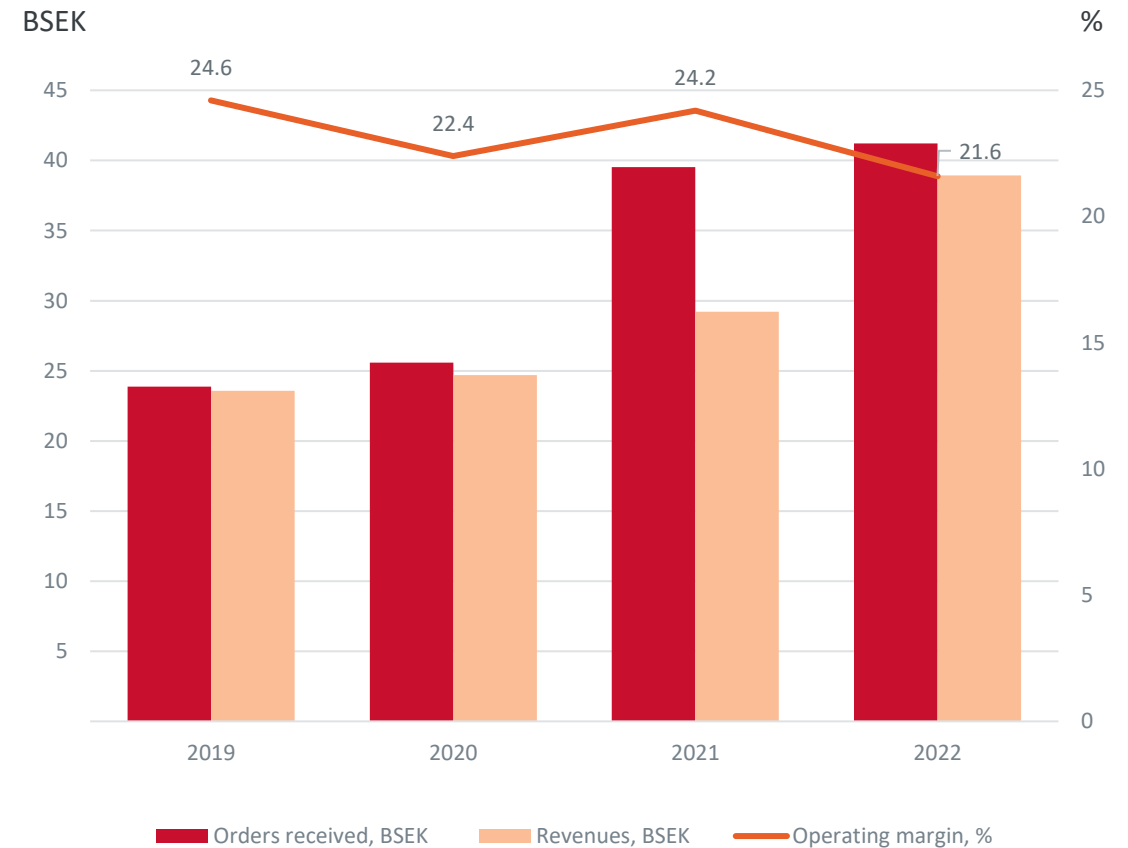
Revenues 2022

BSEK 38.9 / BEUR 3.7*

Share of Group revenue
28%

*Based on the average exchange rate in 2022.

Orders received, revenues and operating margin





INDUSTRIAL TECHNIQUE

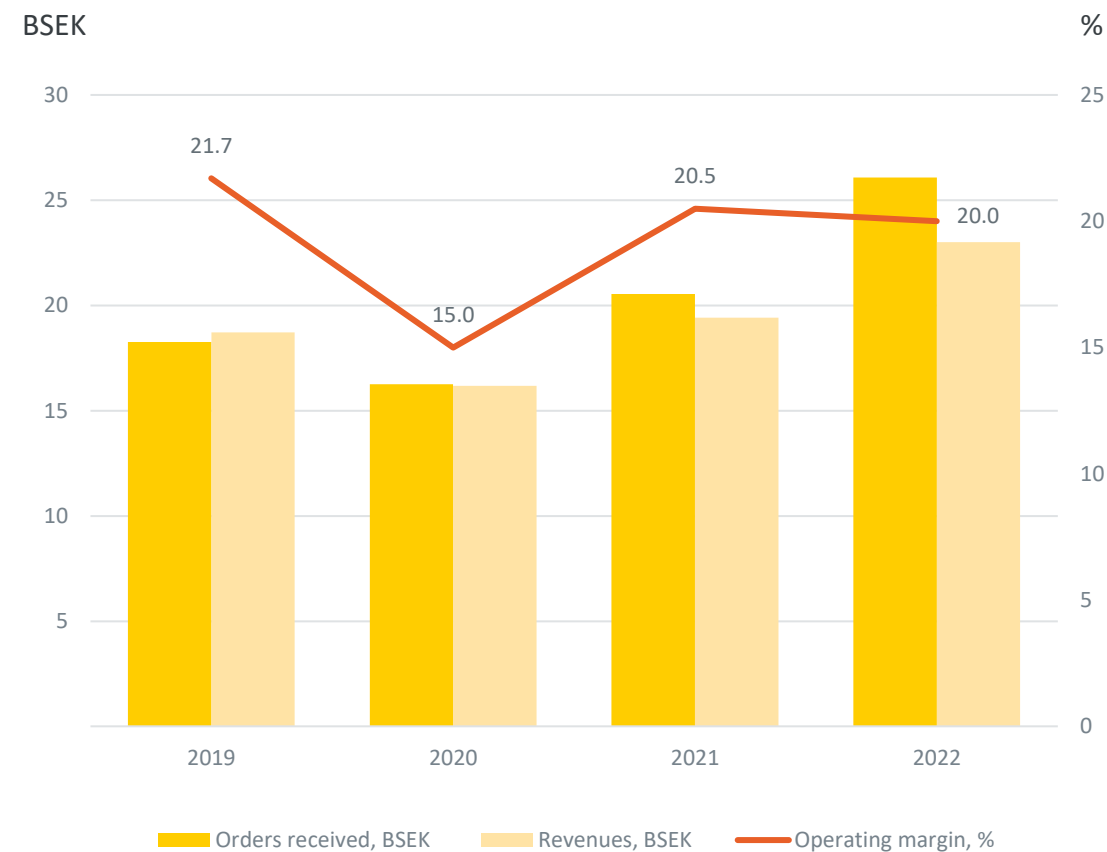
Revenues 2022

BSEK 23.0 / BEUR 2.2*

Share of Group revenue
16%

*Based on the average exchange rate in 2022.

Orders received, revenues and operating margin





POWER TECHNIQUE

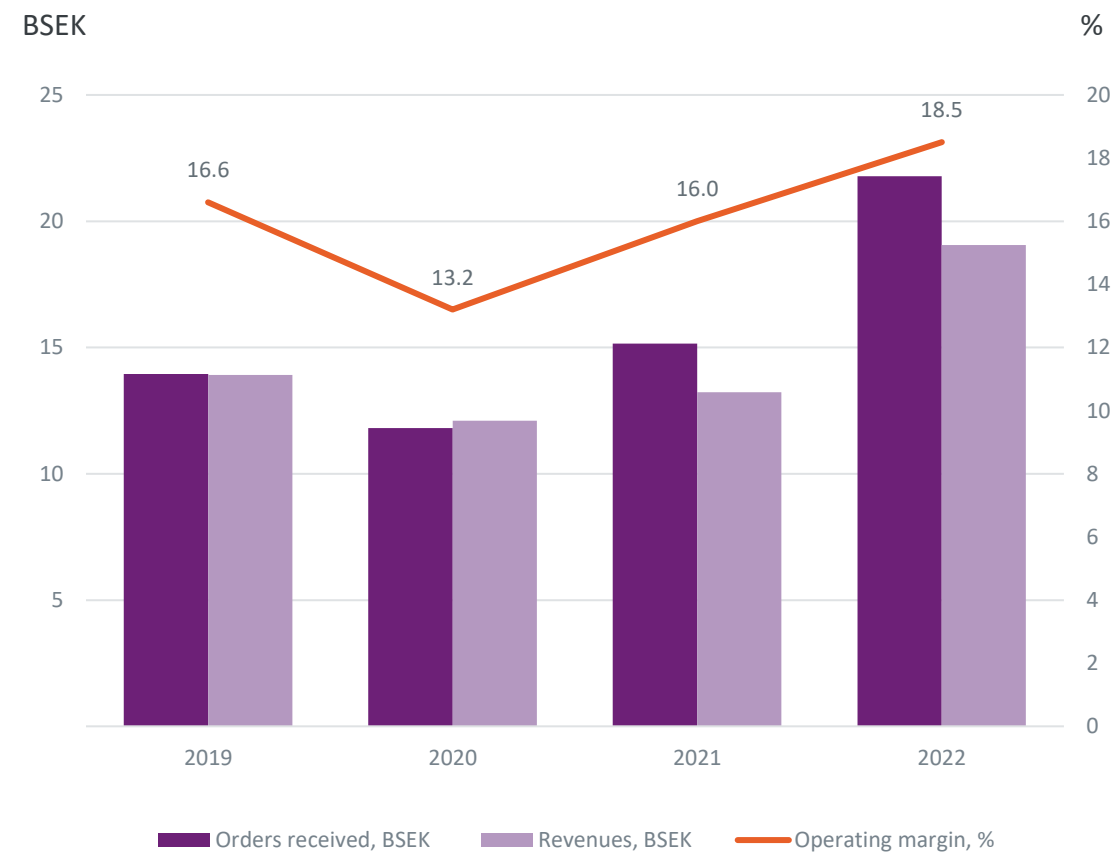
Revenues 2022

BSEK 19.1 / BEUR 1.8*

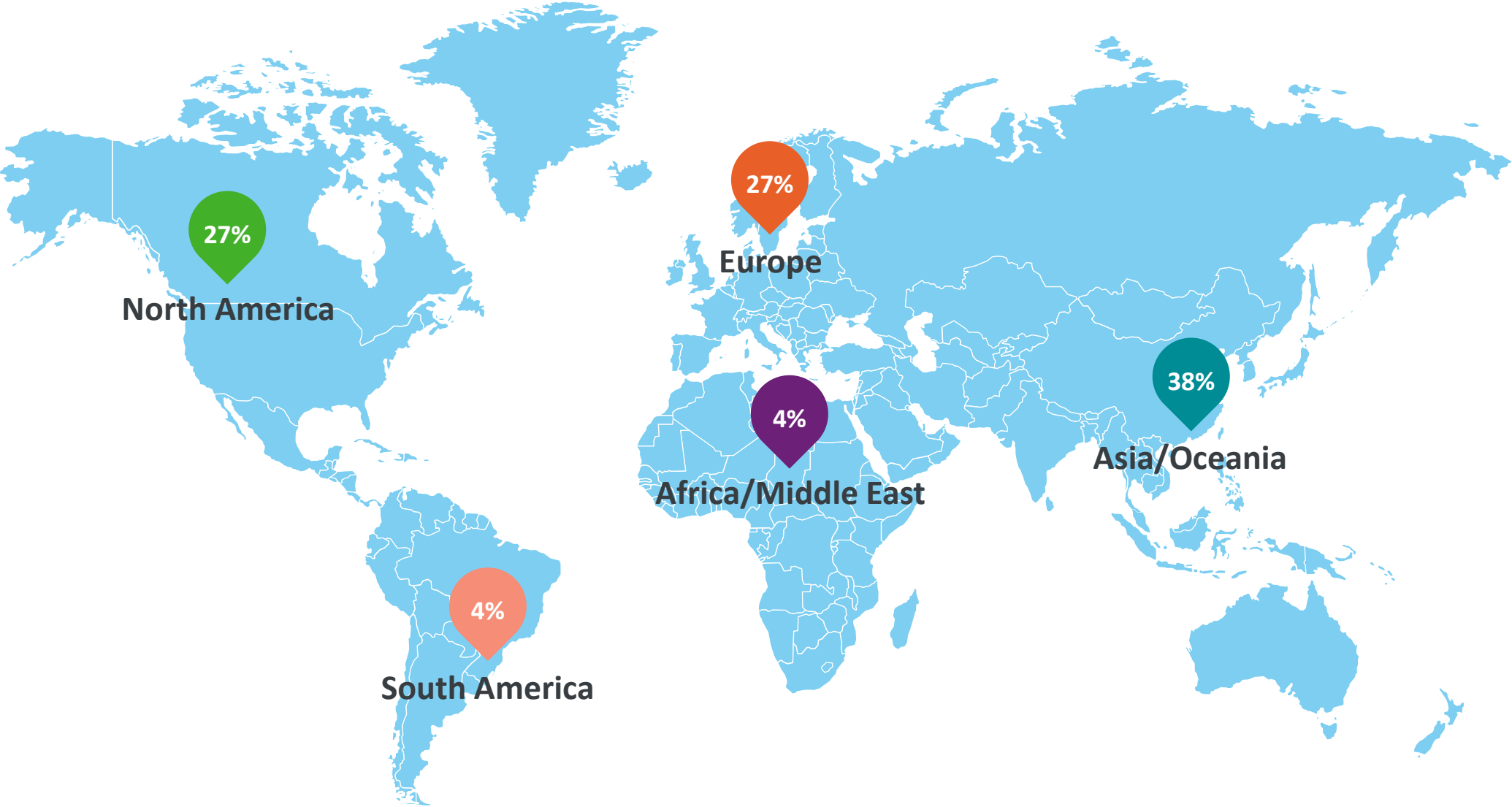
Share of Group revenue
13%

*Based on the average exchange rate in 2022.

Orders received, revenues and operating margin



Orders received by region



A very global presence



A portfolio of strong brands



