



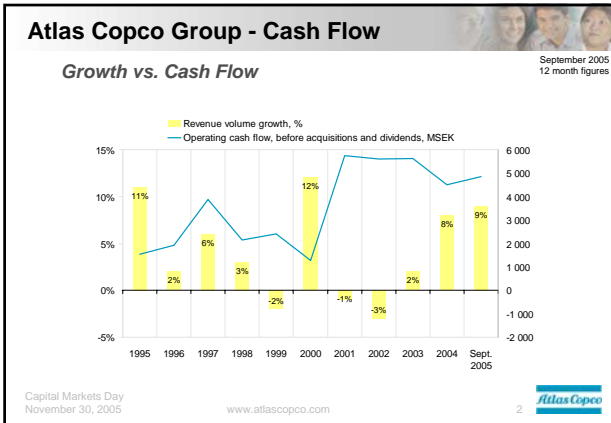
Financials

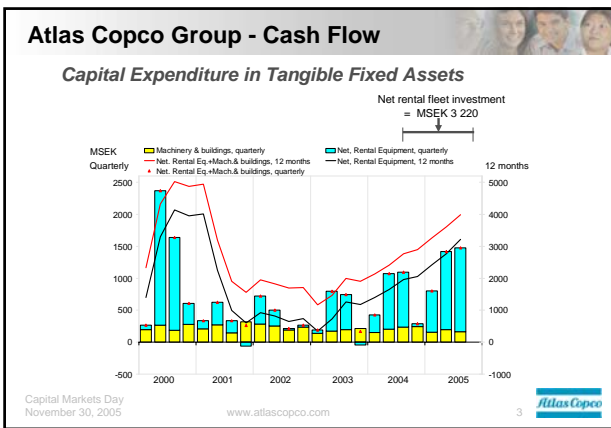
Atlas Copco Group

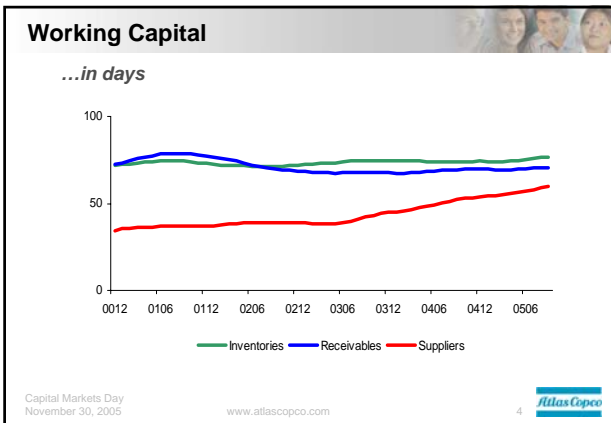
Hans Ola Meyer, CFO

Capital Markets Day, November 30, 2005









Balance Sheet

MSEK	Sep 30 2005	Dec. 31 2004	Sep 30 2004
Property, plant and equipment			
Rental equipment	12 712 24%	9 154 19%	10 424 21%
Other property, plant and equipment	4 266 8%	3 742 8%	3 789 8%
Intangible assets	10 250 20%	8 559 18%	9 358 19%
Other fixed assets	1 692 3%	1 825 4%	1 587 3%
Inventories	7 137 14%	5 647 12%	5 896 12%
Receivables	12 700 24%	10 687 22%	10 818 21%
Short-term investments	325 1%	327 1%	356 1%
Cash and cash equivalents	3 364 6%	2 386 5%	1 939 4%
Assets held for sale	- 0%	5 841 12%	6 150 12%
Total assets	52 446	48 168	50 317
Total Equity	23 145 44%	22 601 47%	22 213 44%
Interest-bearing loans and borrowings	11 303 22%	10 573 22%	12 589 25%
Non-interest-bearing loans and borrowings	17 998 34%	12 782 27%	12 993 26%
Liabilities held for sale	- 0%	2 212 5%	2 522 5%
Total shareholders' equity and liabilities	52 446	48 168	50 317

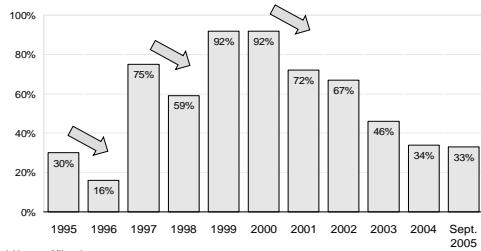
Translation effect	+12%
Acquisitions/divestment effect	- 10%
Volume effect	+ 7%
Total	+ 9%

Capital Markets Day
November 30, 2005

Atlas Copco

Atlas Copco Group

Capital Structure, Net Debt / Equity



Acquisitions Milwaukee Prime Service Rental Service Corporation I-R Drilling Solutions
Capital Markets Day November 30, 2005 www.atlascopco.com

Atlas Copco

Atlas Copco Group - Currency Effects

Policy

- Transaction exposure: Match the currency flows as much as possible. Remaining exposure:
 - Surplus: USD, AUD, CAD, HKD, ZAR etc
 - Deficit: SEK, EUR

The Group buys option contracts on its currency basket to hedge the downside risk. Currently, hedges are at approximately 90% of spot rates and 12-18 month ahead. The result of Group hedges is reported as a corporate item.

- Translation exposure: match assets and liabilities in the same currencies as much as possible. A mismatch is left unhedged.

Capital Markets Day
November 30, 2005

www.atlascopco.com

Atlas Copco

Atlas Copco Group - Currency Basket



Index



Capital Markets Day
November 30, 2005

www.atlascopco.com

8

